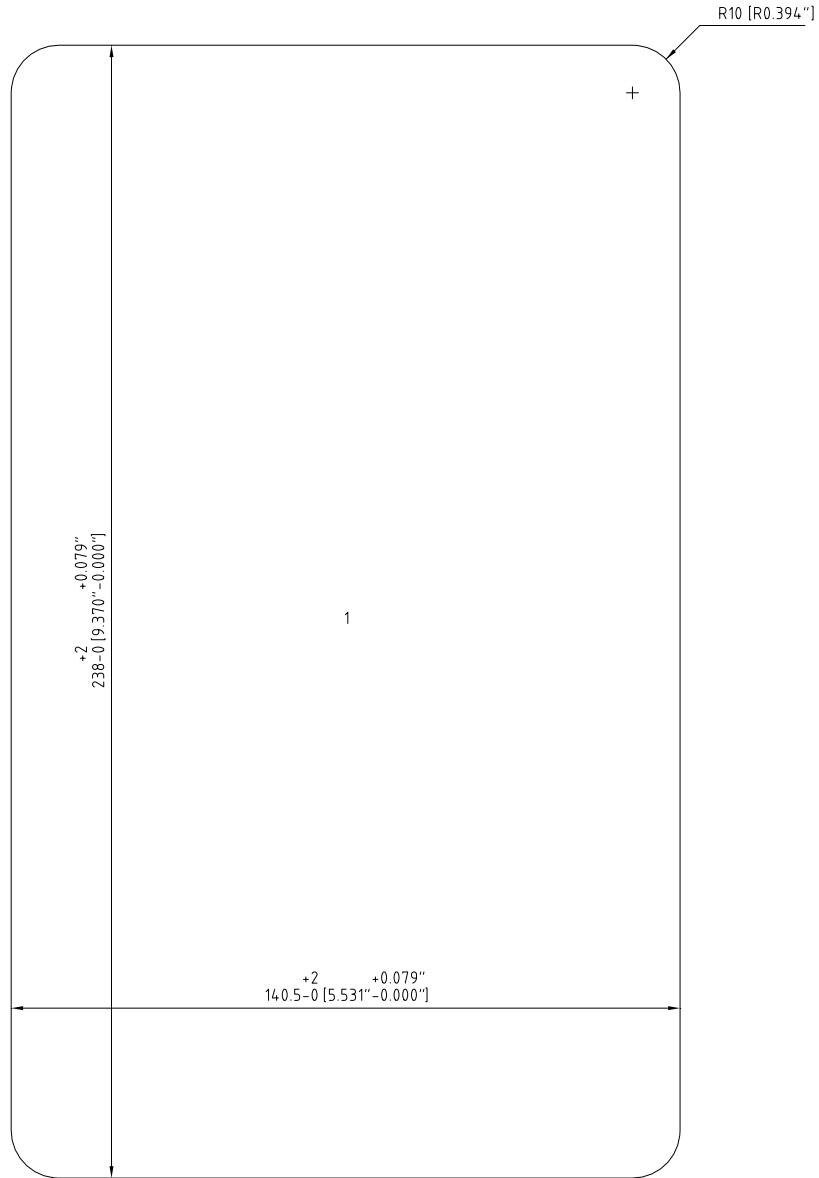


未经授权复制或传播，
使用以及向第三方泄露。

All rights reserved. Unauthorized reproduction, use
or disclosure to third parties is strictly forbidden.



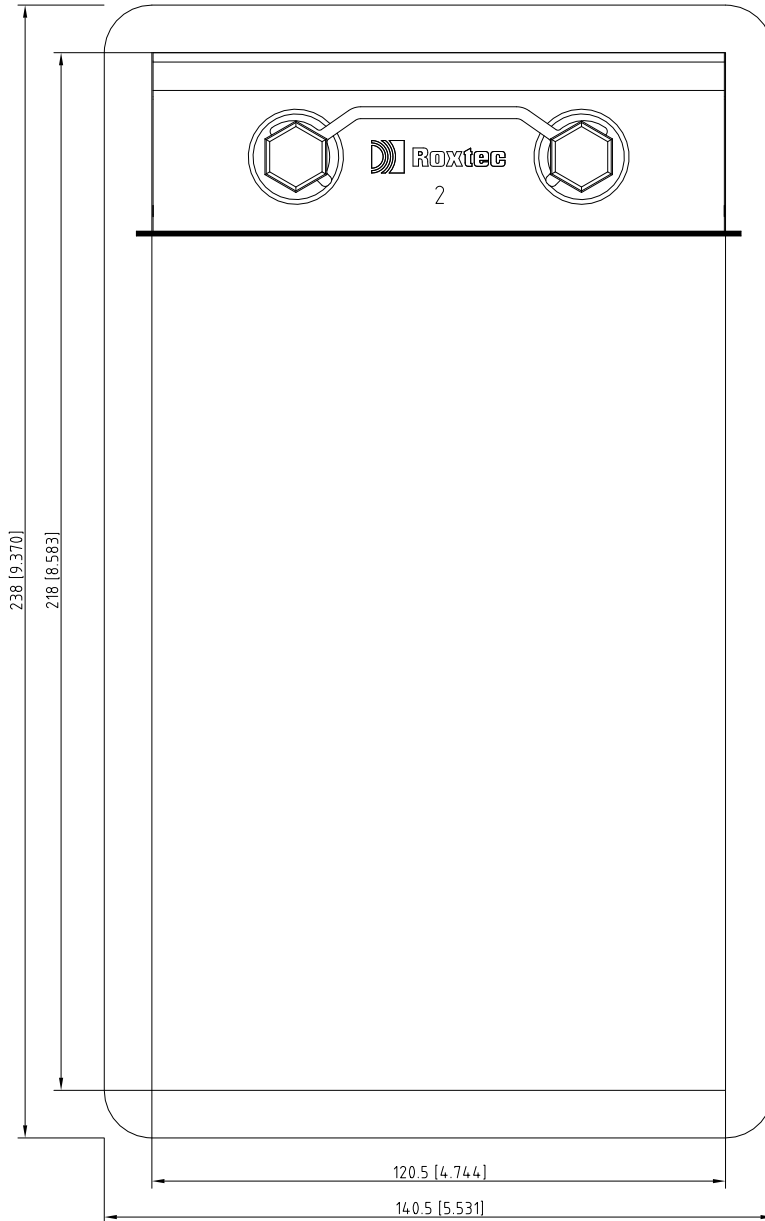
Cutout Detail

Frame: S 6x1 AISI316 Solution: 1

Item	Qty	Roxtec Packing Material	mm []	Roxtec Art No	Weight Kg [lb]
Responsible yube	Created Date 2020-08-28	Modify Date 2020-08-28	Project 台灣大哥大 Location/ Sublocation	TotWeight 4.4 [9.70]	Sheet No
Format	NTS		Transit name S 6*1 框架	1/3	
Client		Drawing number	Rev		



CUTOUT TO FIT SOLUTION WELDING 140.5x238 [5.531"x9.370"]



MODULE WITH PIPE



MODULE WITH CABLE



SPARE MODULE



SOLID MODULE

Detail Drawing

Solution: 1

未经授权复制或
使用以及向第三方泄露。

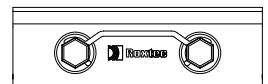
All rights reserved. Unauthorized reproduction, use
or disclosure to third parties is strictly forbidden.

3	1	Stayplate 120 AISI 316	ASP0001200021	0.1 [0.22]	
2	1	Wedge 120 AISI 316	ARW0001201021	0.8 [1.76]	
1	1	S 6x1 AISI316	S006000000121	3.5 [7.72]	
Item	Qty	Roxtec Packing Material	mm ["]	Roxtec Art No	Weight Kg [lb]
Responsible	Created Date	Modify Date	Project	台灣大哥大	
yube	2020-08-28	2020-08-28	Location/ Sublocation	4.4 [9.70]	
Format	NTS		Transit name	S 6*1 框架	
Client			Drawing number	2/3	
				Rev	



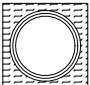

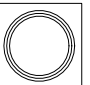

A1

A1



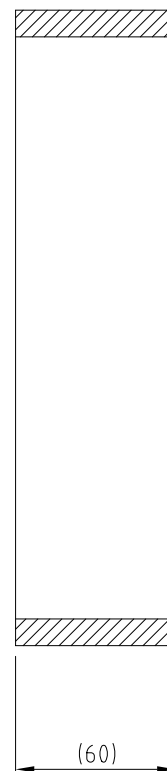
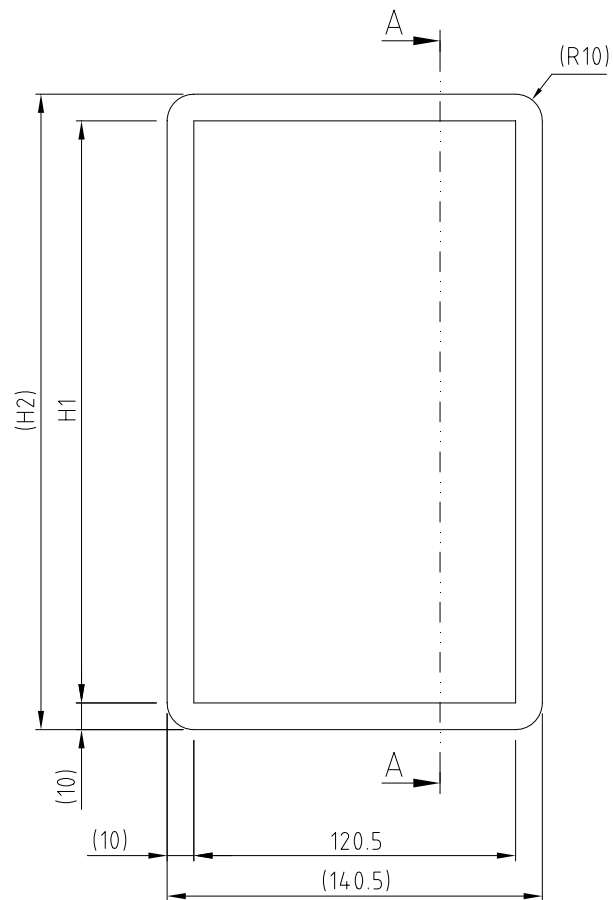
所有權利保留。未經授權嚴禁复制或
使用以及向第三方洩漏。

All rights reserved. Unauthorized reproduction, use
or disclosure to third parties is strictly forbidden.

Pos	Cable ID	Name	Cable Type	Cable Category	OD (mm) [T]	Module Type
						
	MODULE WITH PIPE	MODULE WITH CABLE	SPARE MODULE	SOLID MODULE		
Responsible		Created Date	Modify Date	Project		Lot/Weight
yube		2020-08-28	2020-08-28	台灣大哥大 Location/ Sublocation		4.4 [9.70]
Format		Client	Transit name		Sheet No	
		NTS	S 6*1 框架		3/3	
Client		Drawing number		Rev		



We reserve all rights in this document and in the information contained therein. Reproduction, use or distribution of this document without the written consent of ROXTEC INTERNATIONAL AB is strictly forbidden. ROXTEC INTERNATIONAL AB



A - A

TYPE	H1 (mm)	H2 (mm)
S 2x1	101	121
S 4x1	159.5	179.5
S 6x1	218	238
S 8x1	278	298

A	NEW LAYOUT/TITLE BLOCK	2006-12-21	R PETERSSON
Rev	Type of revision	Date	Sign

Item	Qty	Designation	Specification				NetWeight
ROXTEC INTERNATIONAL AB BOX 540 S-371 23 Karlskrona TEL: +46 455 366700 FAX: +46 455 82012		Designed by J HELLKVIST	Date 2003-11-03	General tolerance DIN ISO 2768-1/2-m/K	Welded details EN ISO 5817-B EN ISO 10042-B	General surface roughness, Ra 12,5	TotWeight -
		Checked by S MILTON	Formal A3	Title S FRAME		Projection method 	
		Approved by S MILTON	Scale 1:2	SINGLE FRAME		Rev A	
		Restricted due to INFORMATION DRAWING	Drawing number S1005518				

